

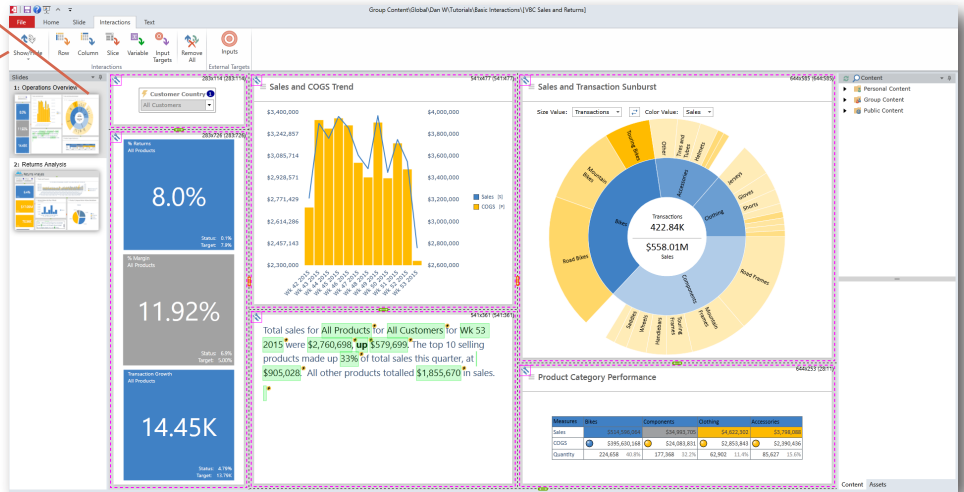
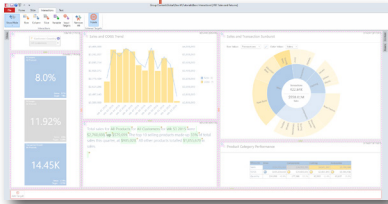
BI Office Basic Interactions in Story Board

BI Office Interactions tie content together in Story Board by linking data together with slicer, row, and column joins. Bring dashboards alive with powerful filtering to engage audiences by making the data tell the story.

Open Story Board Editor

In order to start adding **Interactions**, begin with a slide that includes at least one **slicer** and two **views**.

On the **Interactions** tab, check the **Show/Hide** button to see if Interactions exist or not. Interactions appear as arrows drawn from the **slicer** to the **views**. There are no interactions enabled on this page.

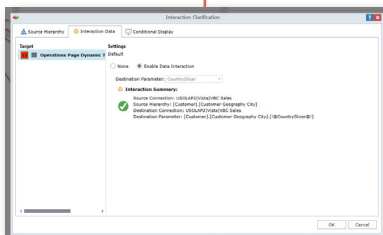
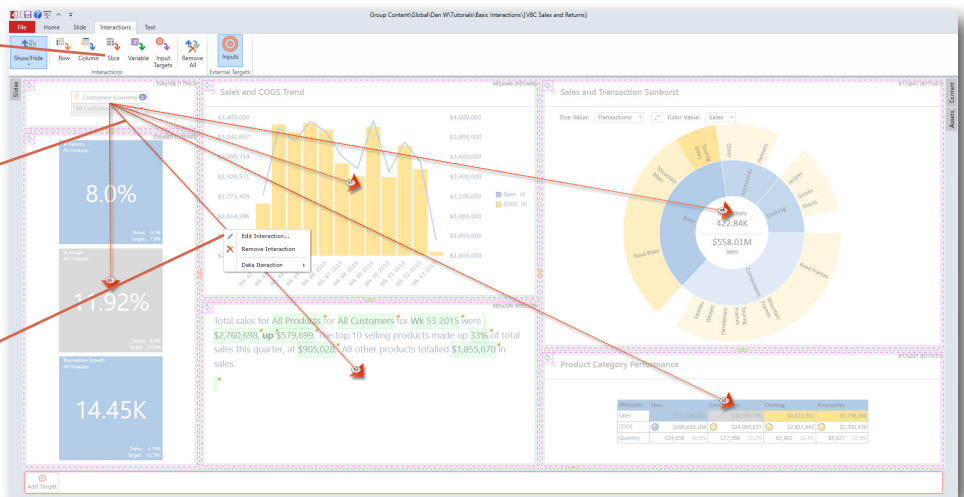


Adding Slice Interactions

Select **Slice** to start adding slice interactions.

Simply select the **slicer**, then **drag** and **drop** the interaction arrow onto all desired views. This will create an interaction arrow that will connect the view.

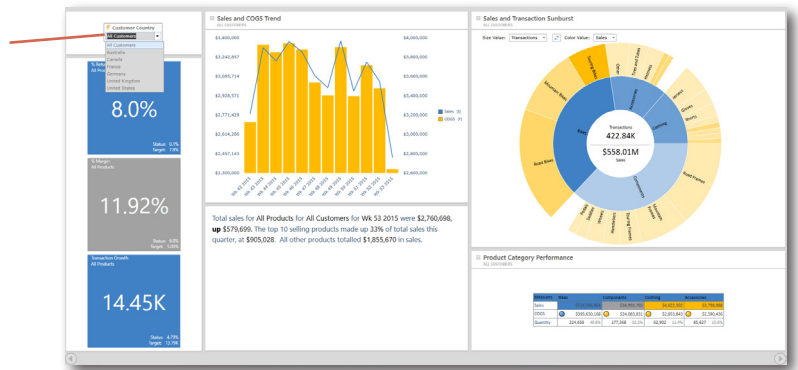
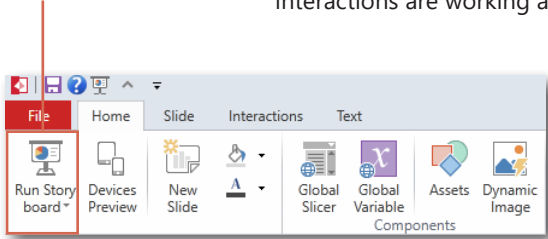
Right click on an **Interaction** to **edit** it. Users can see the **source hierarchy** to understand where it is being **passed** and **joined** to.



Testing Interactions

From the Home tab select **Run Story board**.

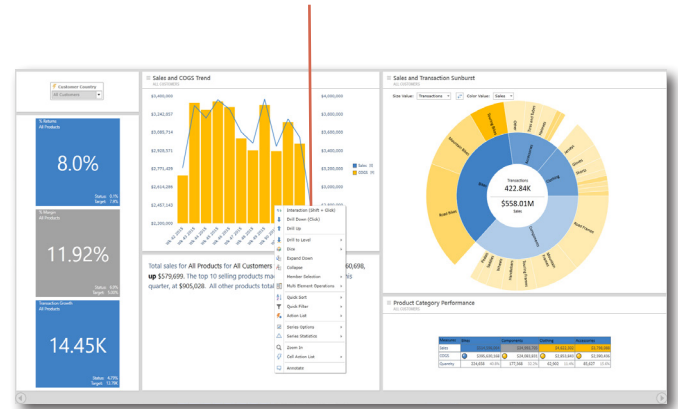
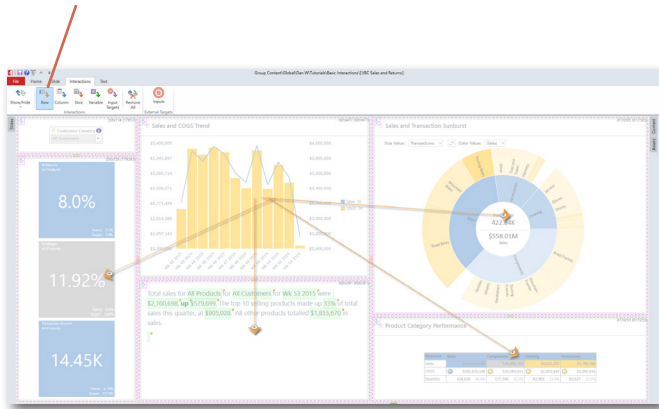
See the dashboard in run mode. On the **slider**, select the down arrow and change the **selection** to see all **views** update and verify that the interactions are working as desired.



Adding Row Interactions

Select the **Row** button on the Interactions tab. **Drag and drop** interaction arrows from the view containing the row to all other desired views.

In run mode, right click on a **row item** and choose **Interaction** to launch that item as a filter, and **update** all of the views.



Adding Column Interactions

Select the **Column** button on the Interactions tab. **Drag and drop** interaction arrows from the view containing the column to all other desired views.

In run mode, right click on a **column header** and choose **Interaction** to launch that item as a filter, and **update** all of the views.

